



Békéscsaba, 2025

SELF BRIEFING

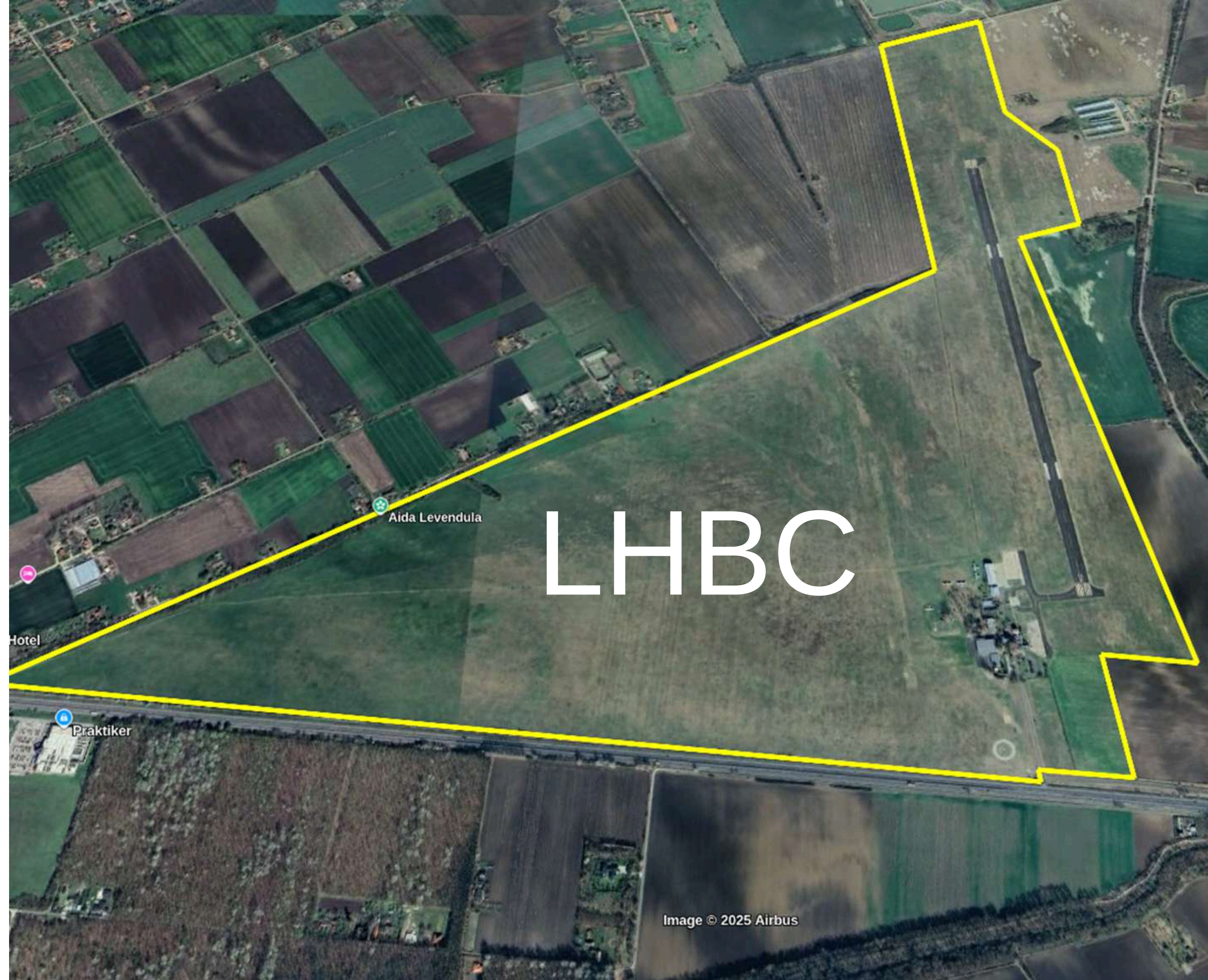
Agenda

- Contest site boundary
- Tie-down Area
- Weighing
- Staging
- Gridding
- Launch Procedures – RWY 17 & 35
 - Grid and re-land
 - Release area
 - Land back for Aero-tow relight
 - Aero-Relight Zone for Motorgliders
- Arrival Procedures – RWY 17 & 35
 - Finishing
 - Landing
 - GND recovery operation
- Team FRQs



CONTEST SIDE BOUNDARY

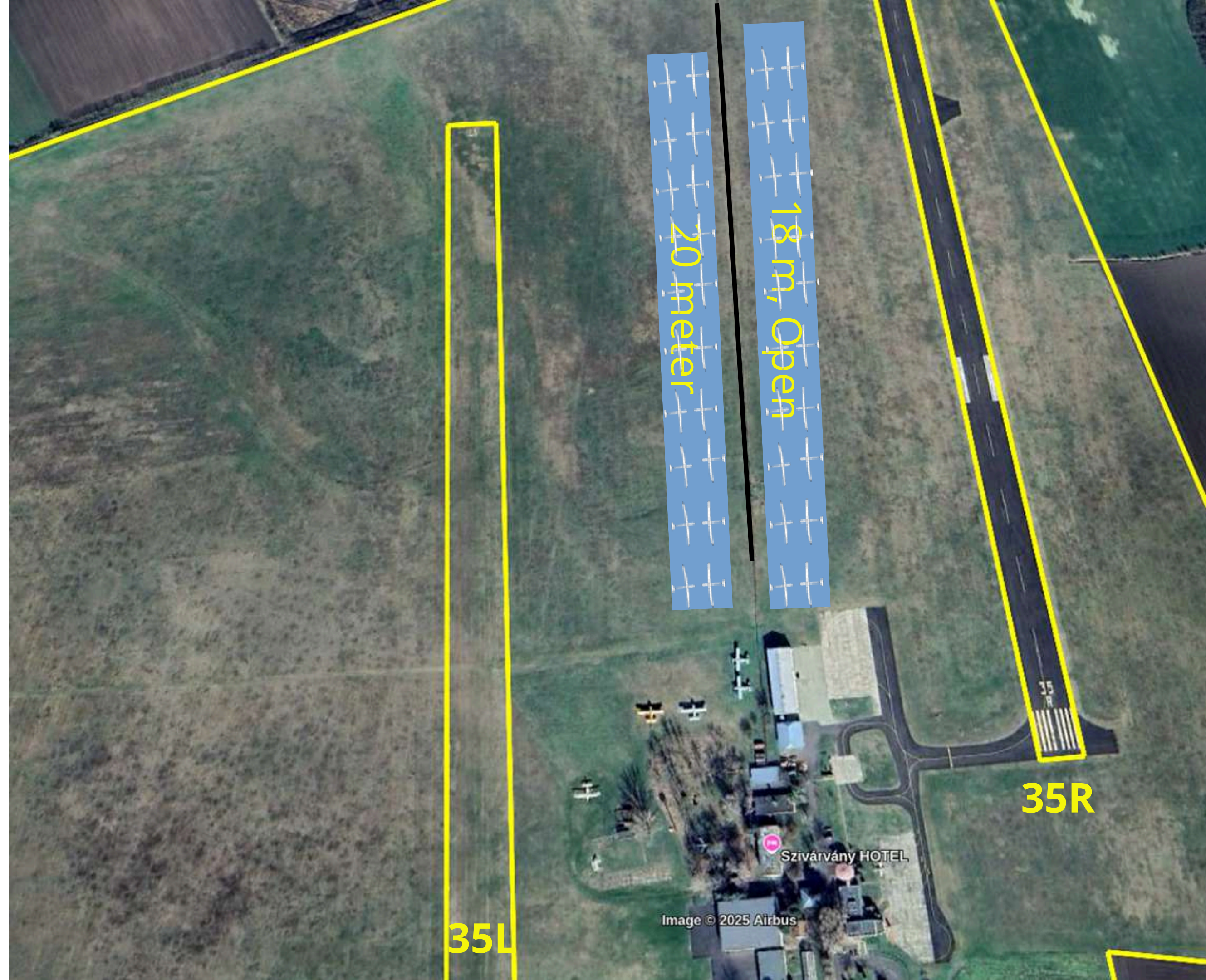
SC3a 7.2.1
Area of LHBC
Inside A/D fence



TIE-DOWN AREA

20 m: on the East side
of RWY 35L

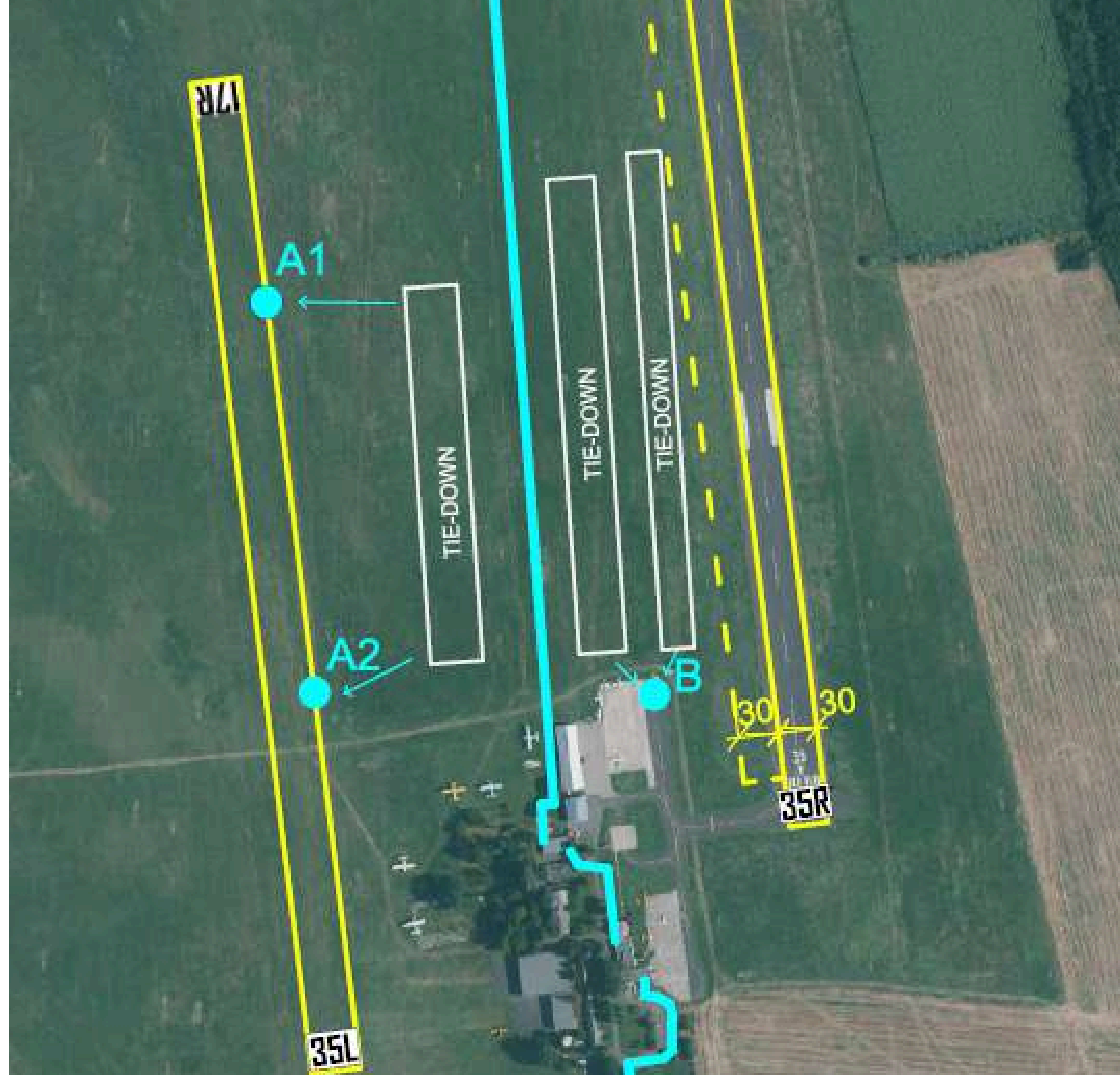
18m, Open: on the
West side of RWY 35R



WEIGHING

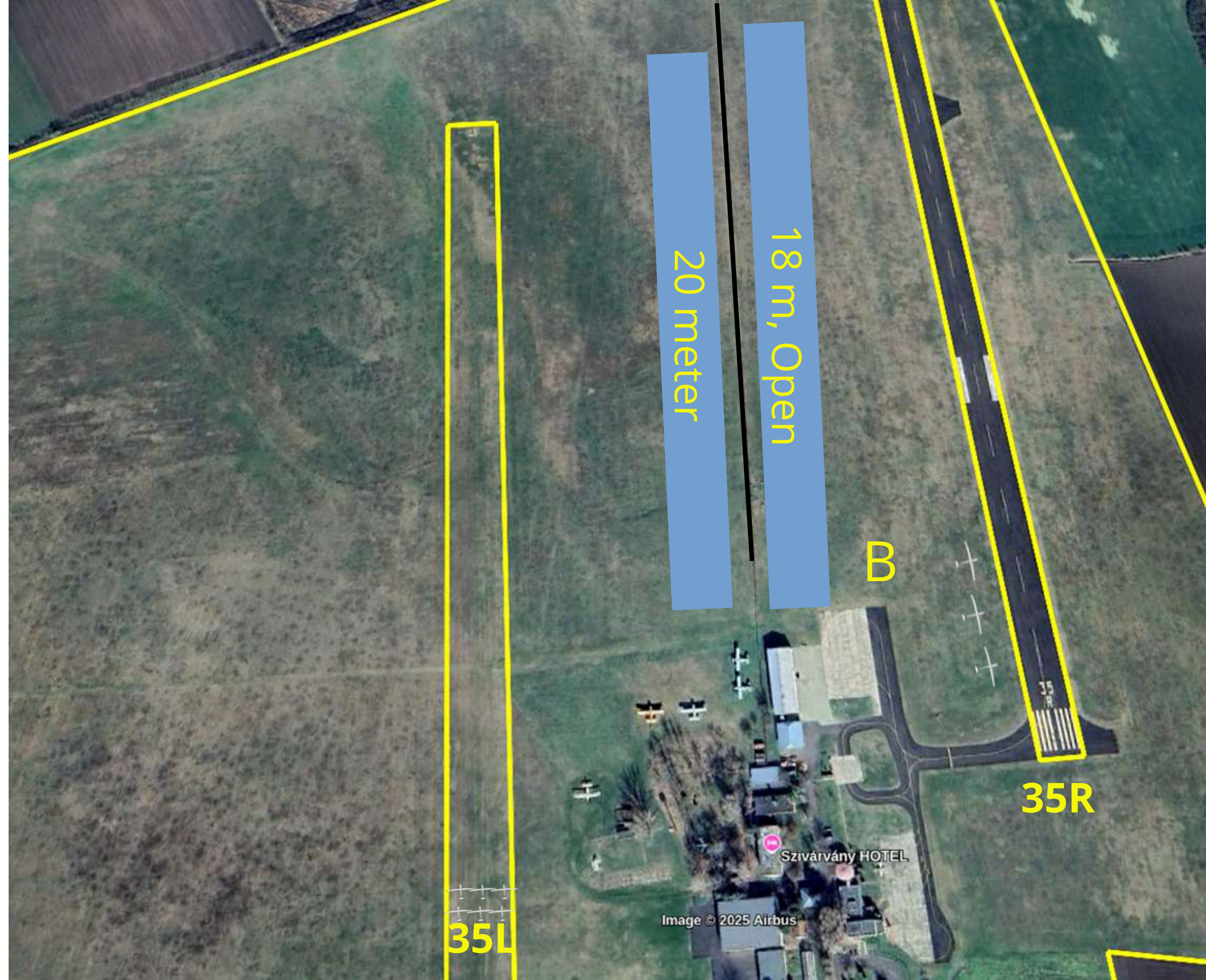
20 m: Station A

18m, Open:
Station B



STAGING (18M, Open)

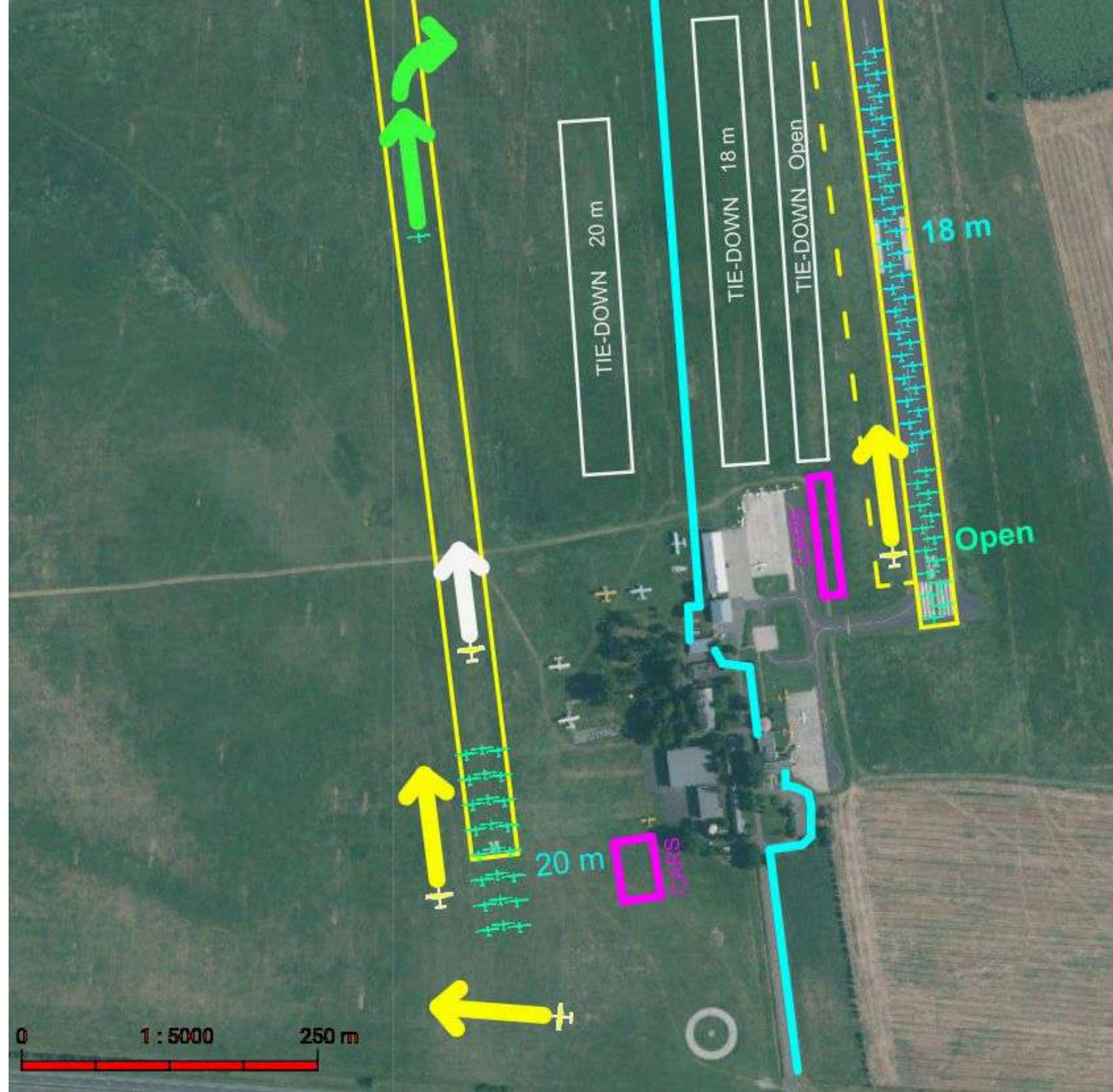
after weighing position
your glider near the
solid RWY at the
appropriate row 10
meter off the surface



GRIDDING RWY35

20 m: weighing

18m, Open:
after staging
at grid time



LAUNCH 35

TAKEOFF

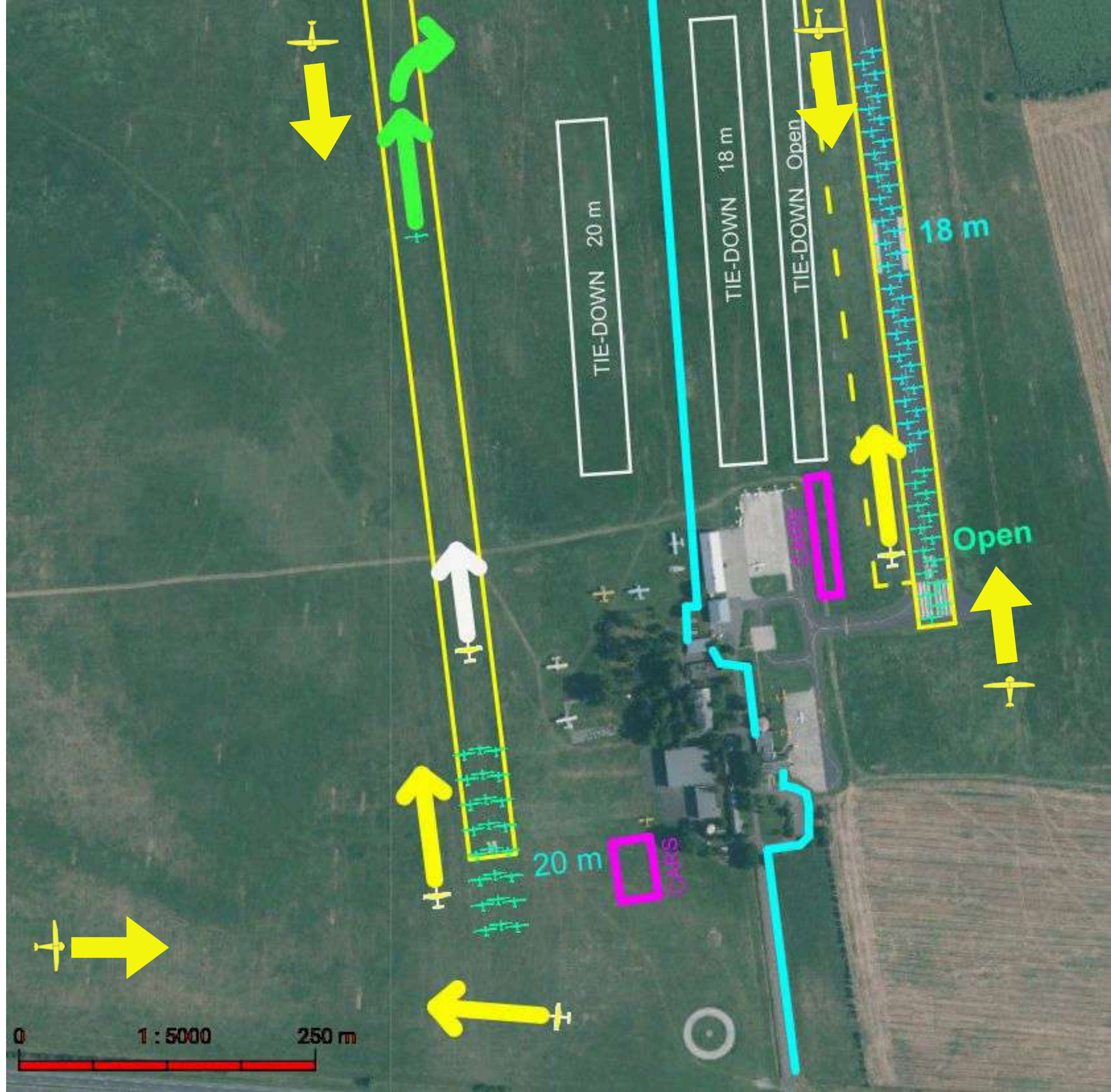
20 m: RWY 35L (grass)

18m, Open: RWY 35R
(solid)

LAND BACK

gliders: long,
W to RWY (grass)

TUGs: short on both sides



LAUNCH 35

RELEASE AREA:

20M: West (left side)

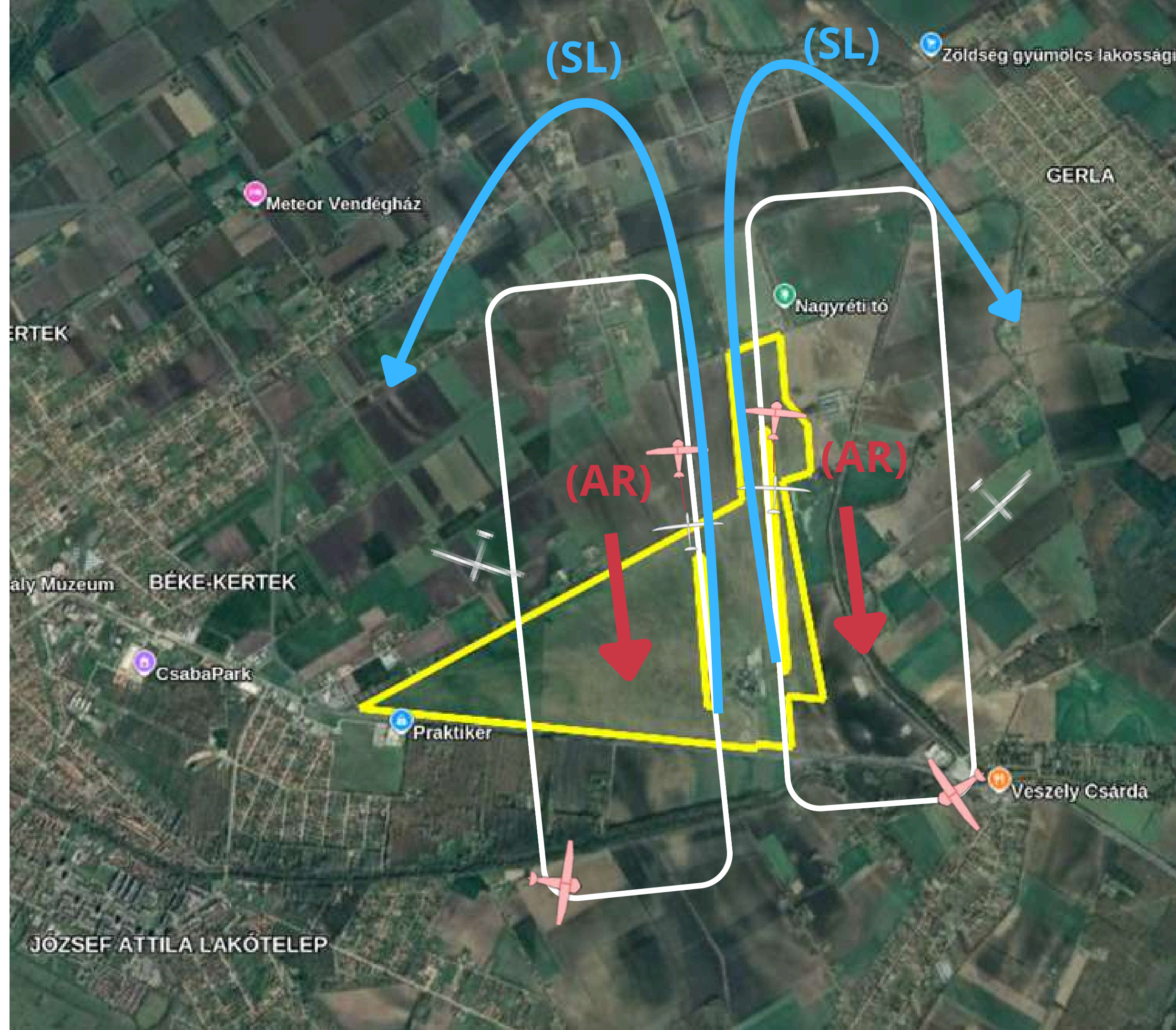
18m, Open: East (right side)

SELF-Launch (SL):

Path OUTSIDE

AIR-RELIGHT (AR)

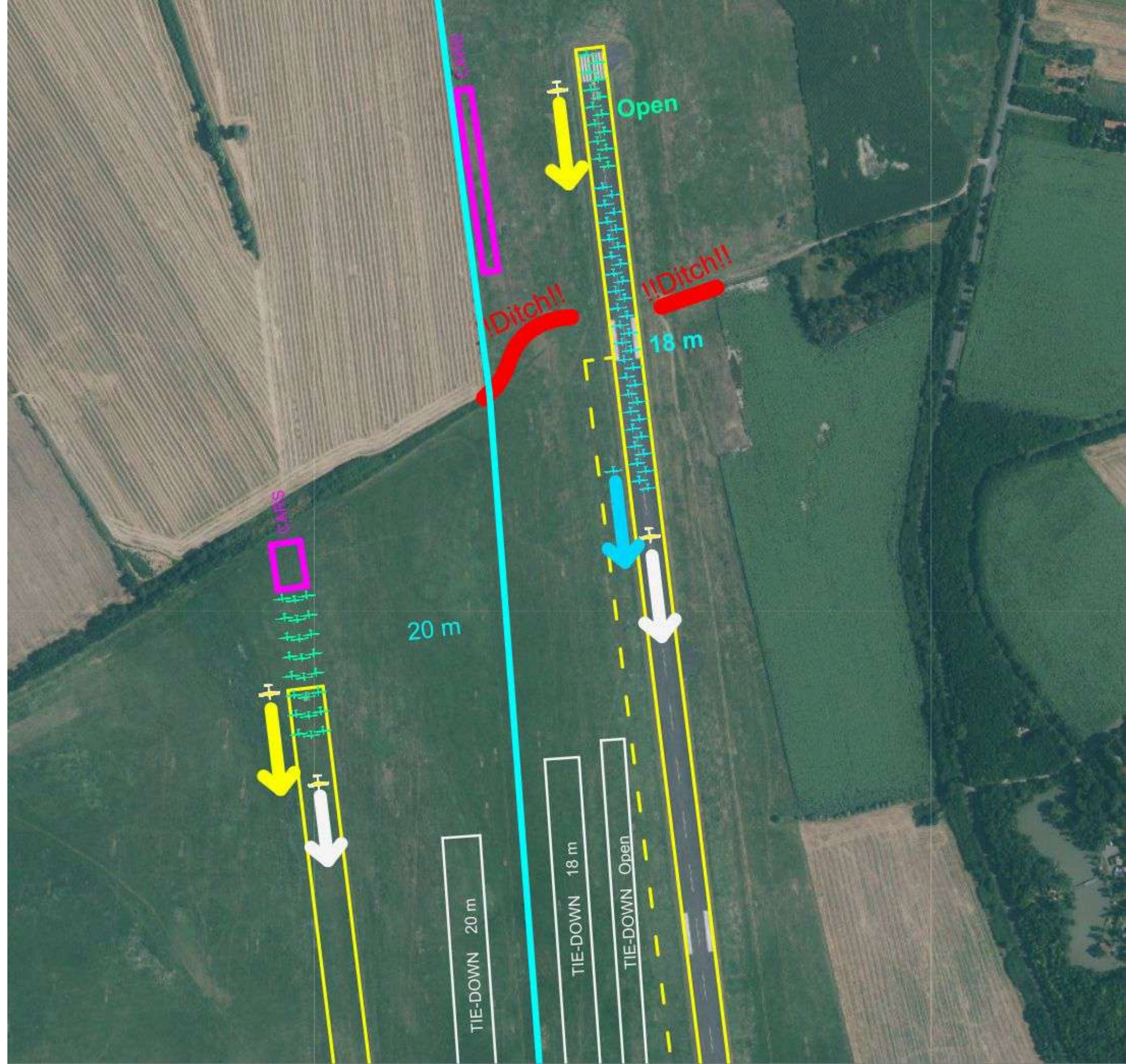
- Downwind to either RWY
- MOP below 200 m AGL
- Join SL climb pattern toward appropriate Release Area



GRIDDING RWY17

20 m: weighing

18m, Open:
after staging
at grid time



LAUNCH 17

TAKEOFF

20 m: RWY 17R (grass)

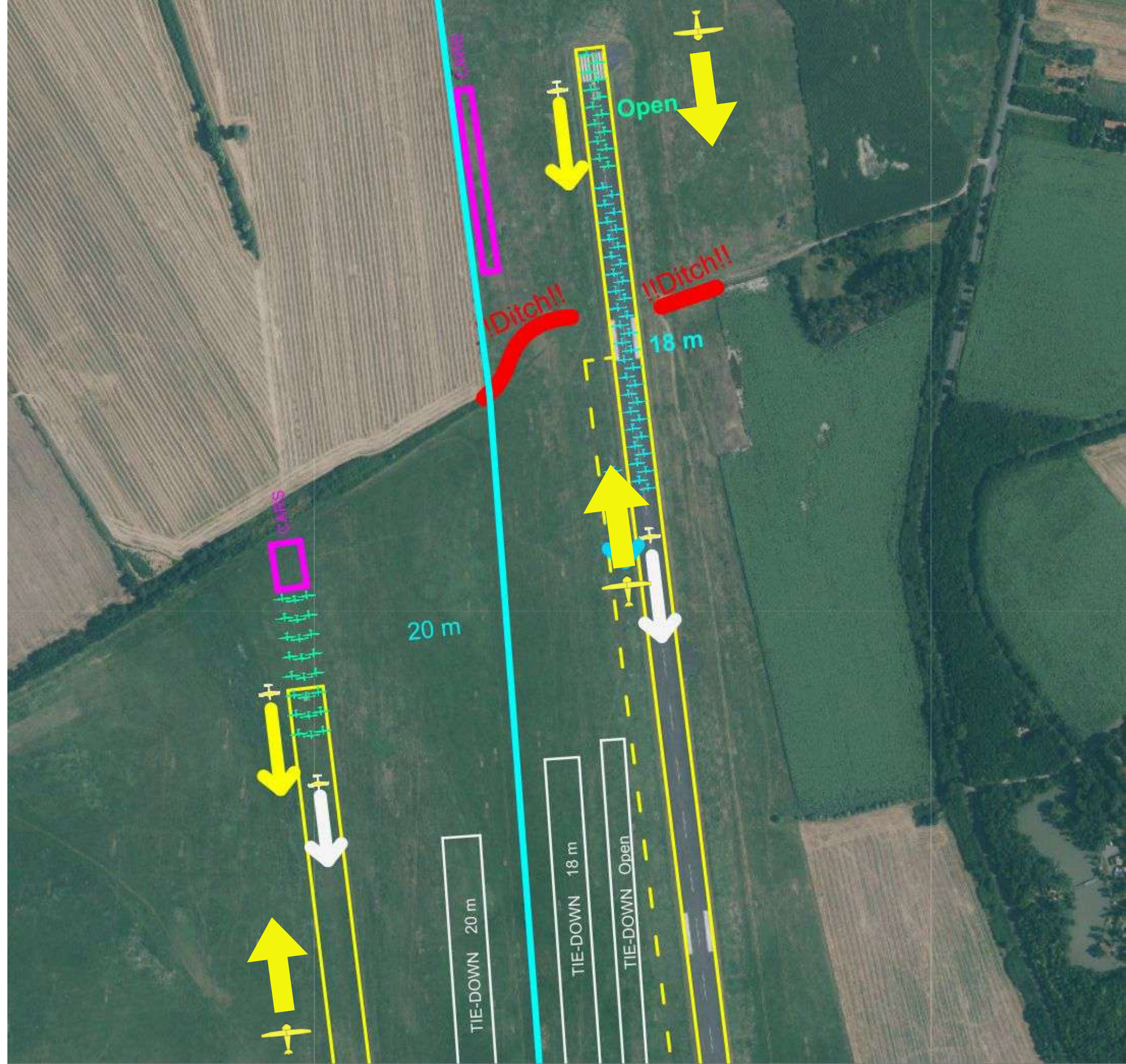
18m, Open: RWY 17L
(solid)

LAND BACK

gliders: long,

W to RWY (grass)

TUGs: short on both sides



LAUNCH 17

RELEASE AREA:

20M: West (left side)

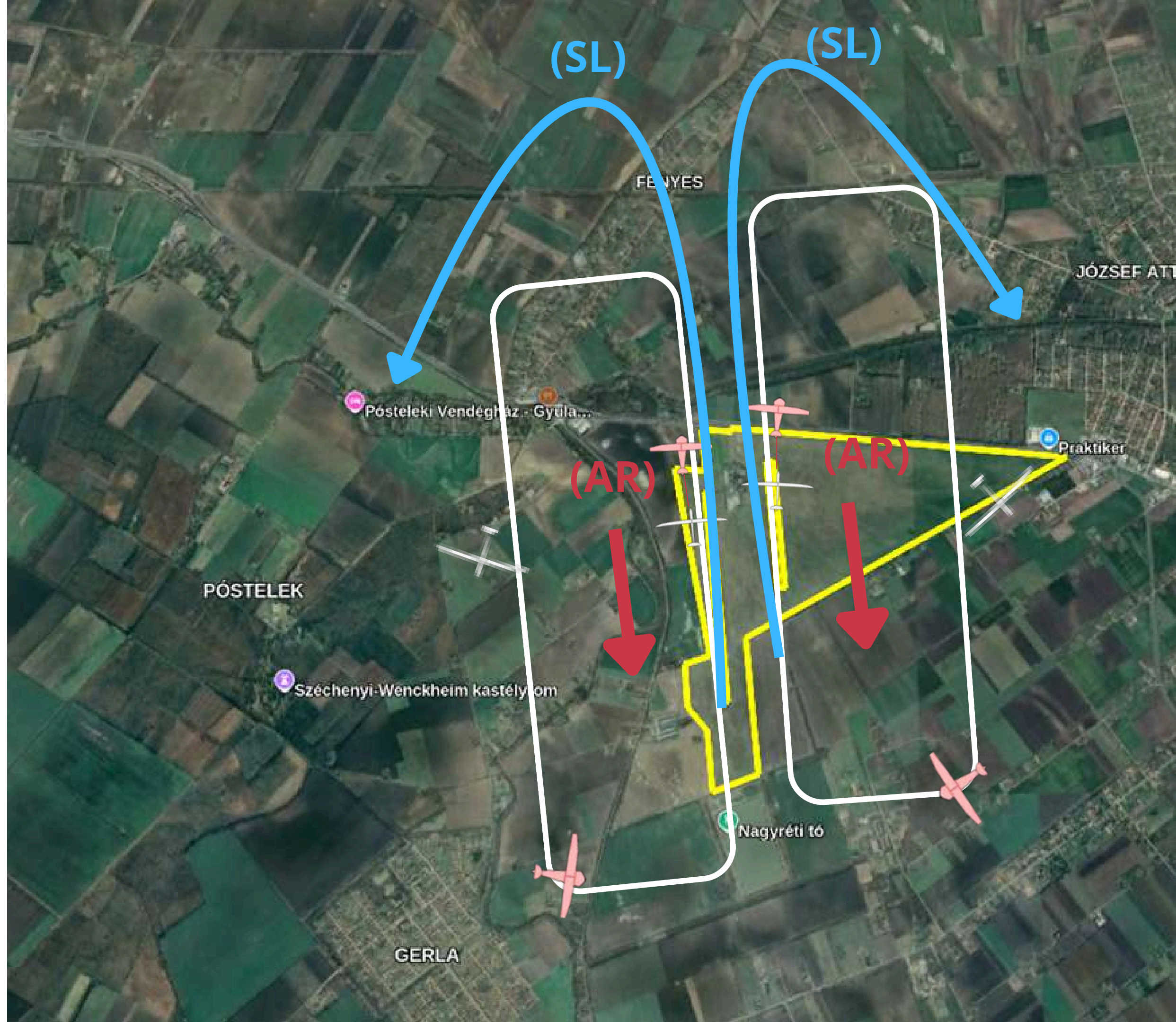
18m, Open: East (right side)

SELF-Launch (SL):

Path OUTSIDE

AIR-RELIGHT (AR)

- Downwind to either RWY
- MOP below 200 m AGL
- Join SL climb pattern toward appropriate Release Area



ARRIVAL 35

FINISH RING

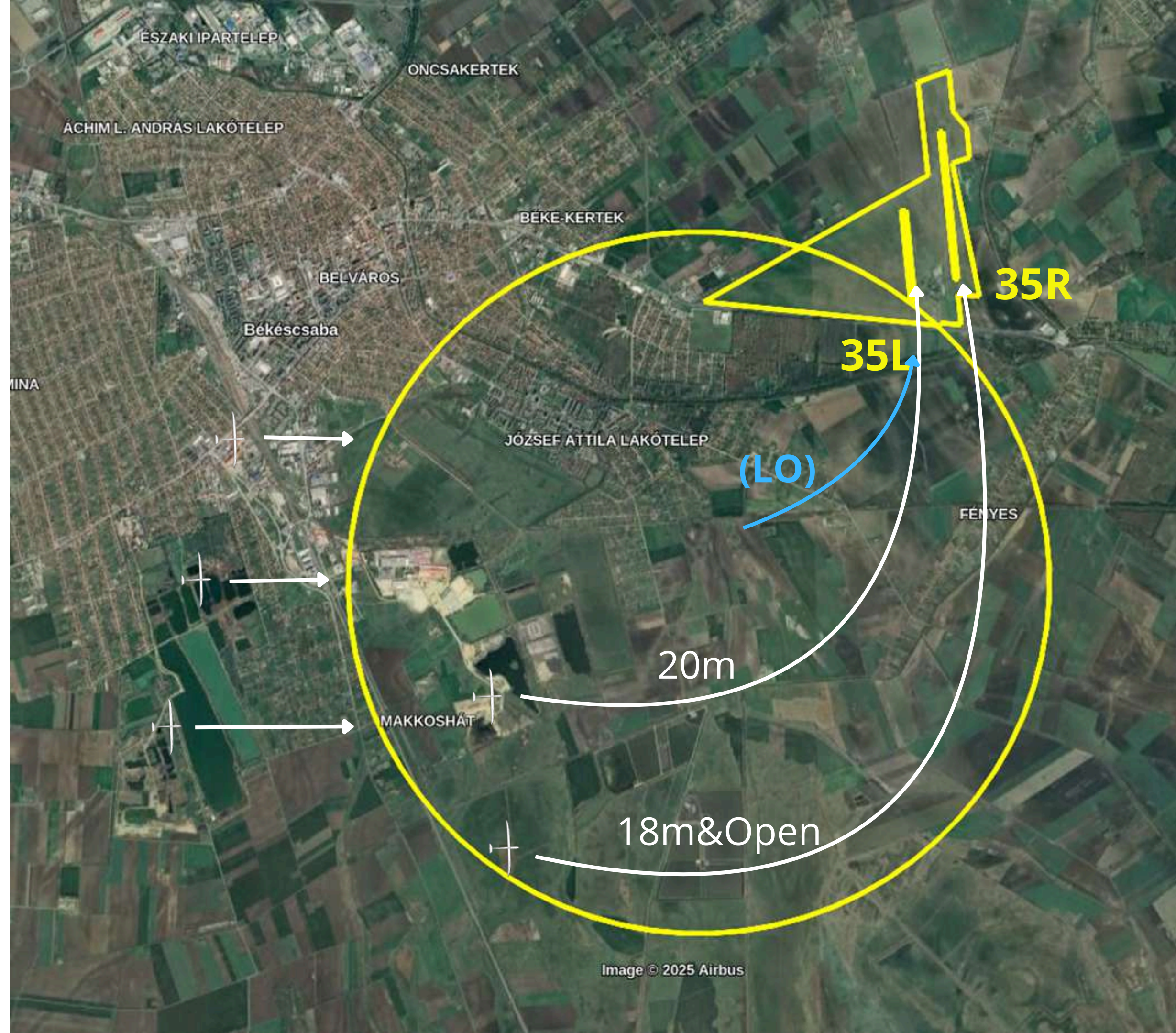
- R=3km
- SW from TRH 35
- ALT > 380m AMSL

AFTER FINISH

- **20m:** Join Base 35L
- **18m&Open:**
 - Fly E/SE
 - Join Base to 35R
 - Long Final to 35R

LOW ENERGY (LO):

direct to THR 35L



ARRIVAL 35

LONG LANDING

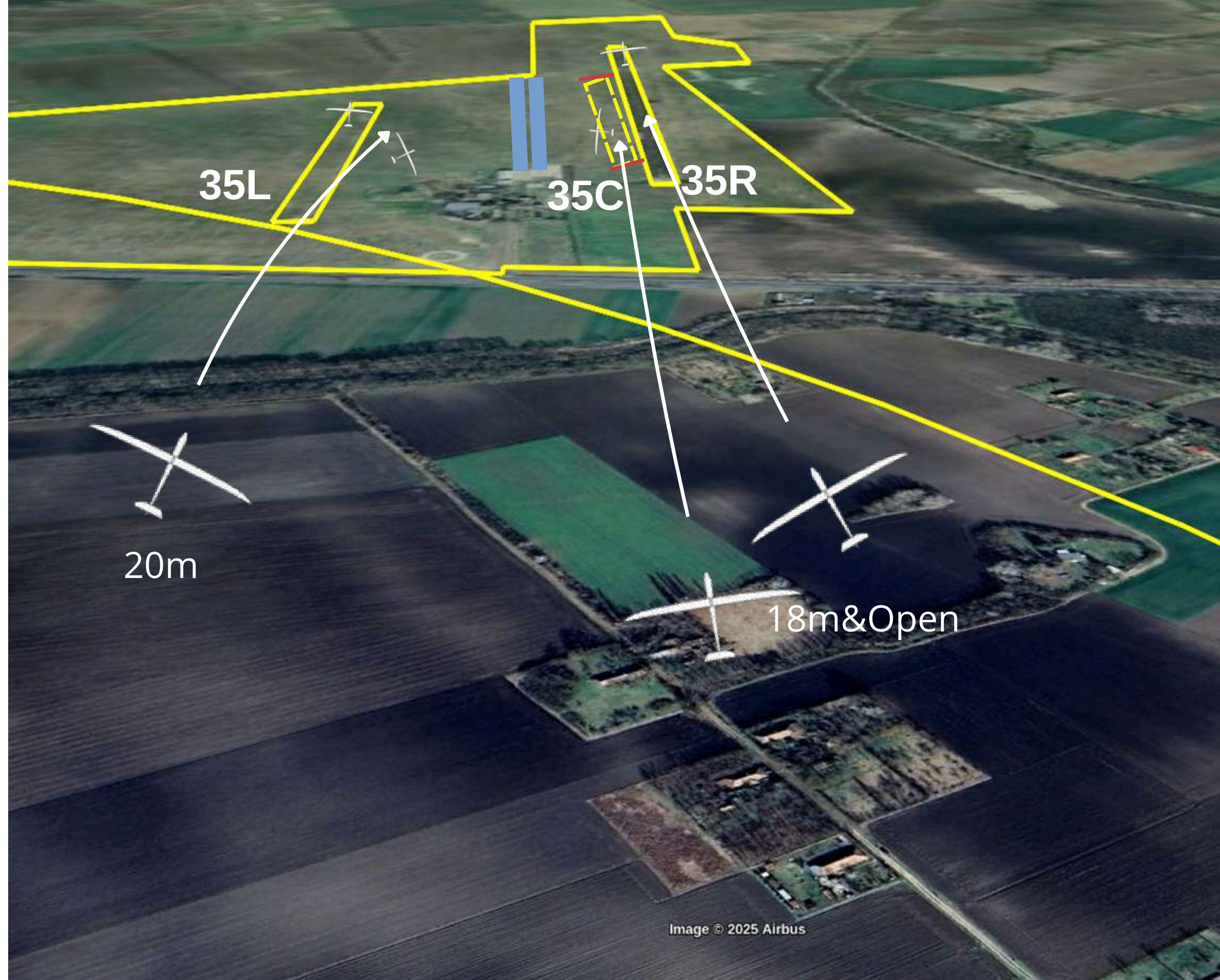
20m: 35L (grass)

- Vacate RIGTH or
- Roll along RWY

18m & Open:

35R (solid) & 35C (grass)

- LONG landing
- Vacate LEFT or
- Roll along RWY



ARRIVAL 17

FINISH RING

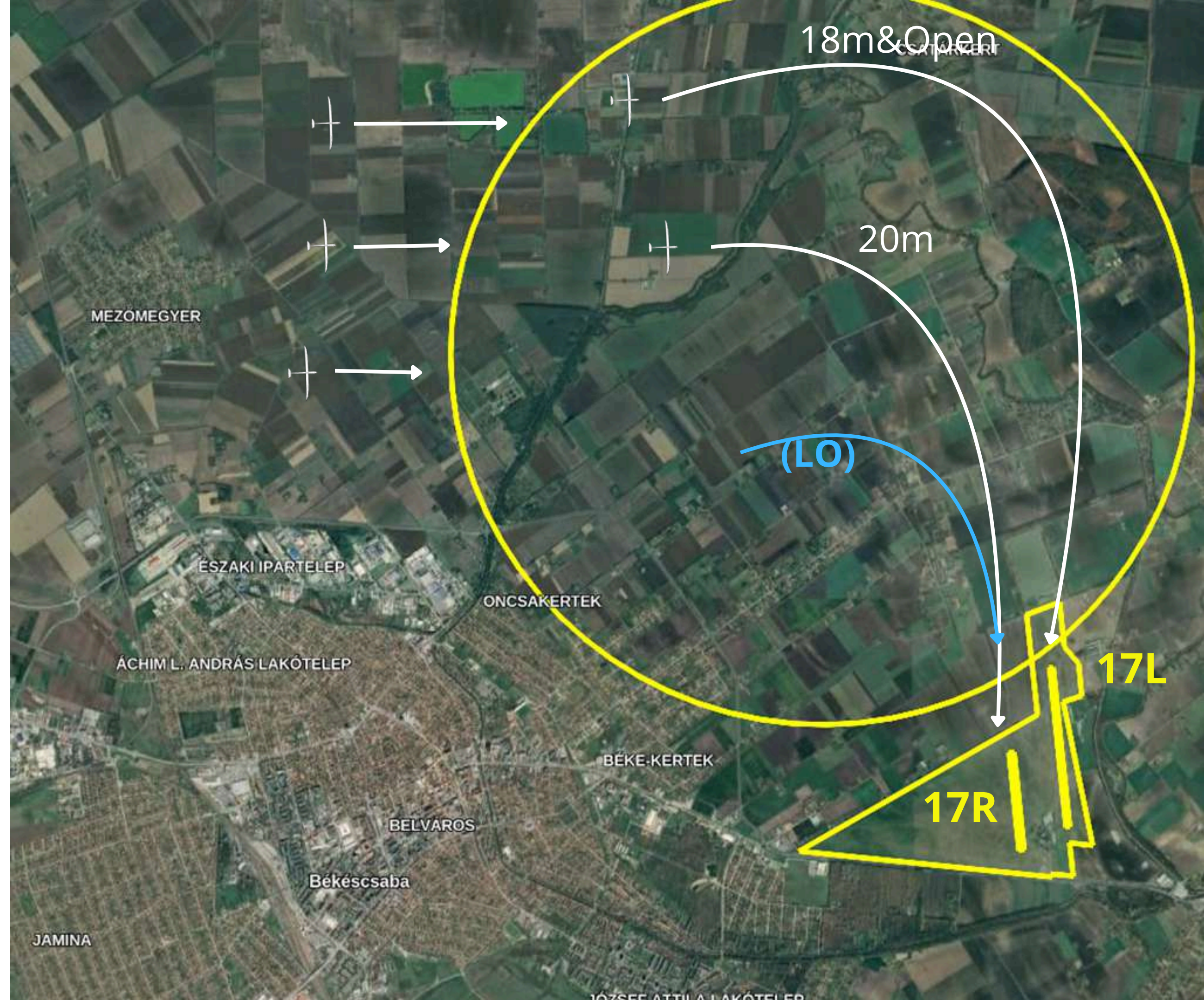
- R=3km
- NW from TRH 17
- ALT > 380m AMSL

AFTER FINISH

- **20m:** Join Base 17R
- **18m&Open:**
 - Fly E/NE
 - Join Base to 17L
 - Long Final to 17L

LOW ENERGY (LO):

direct to THR 17R



ARRIVAL 17

LONG LANDING

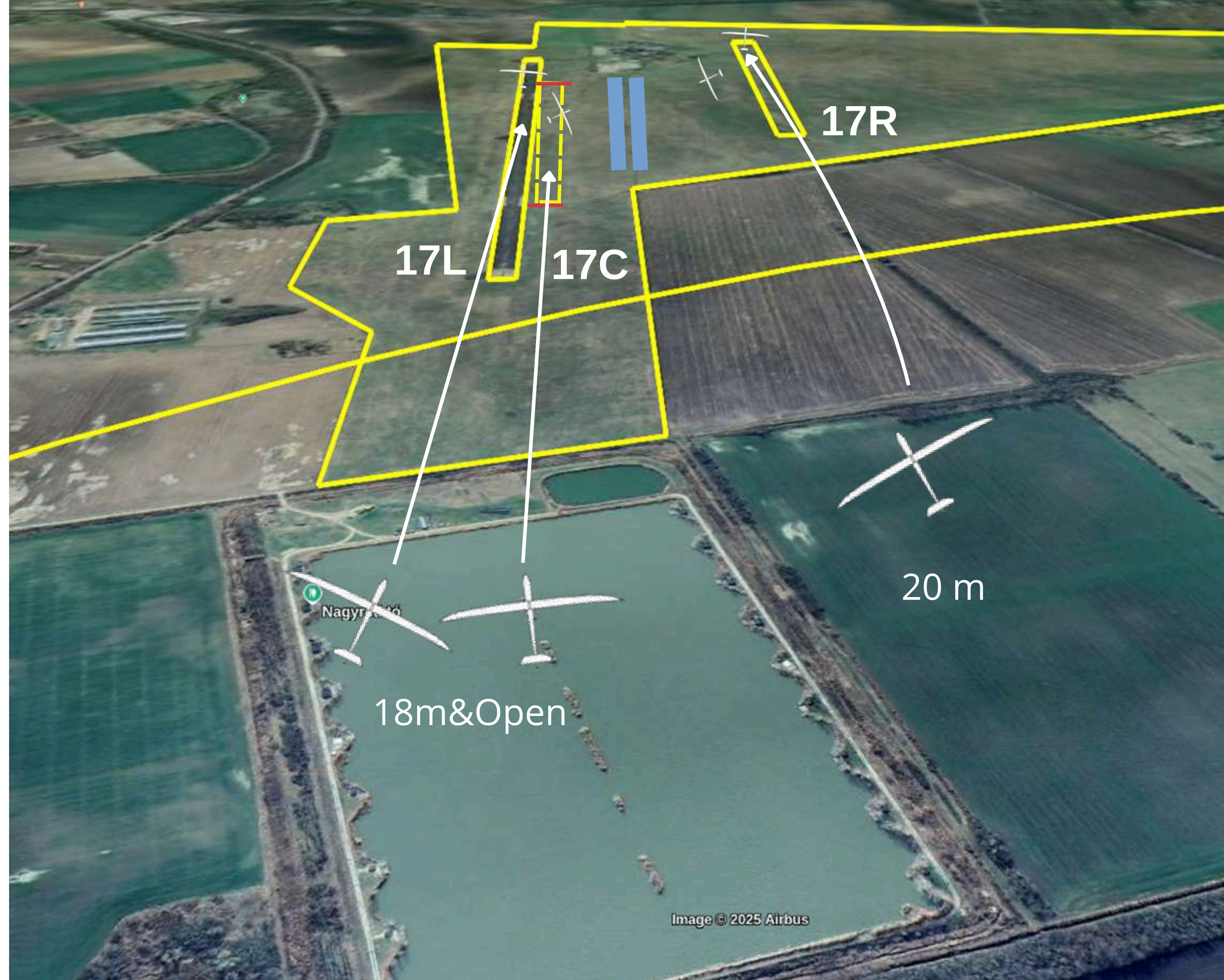
20m: 17R (grass)

- Vacate LEFT or
- Roll along RWY

18m & Open:

17L (solid) & 17C (grass)

- LONG landing
- Vacate RIGHT or
- Roll along RWY



Team FRQs



118.860	Hungary	
121.460	Germany	
122.035	Czech Republic	
122.885	United Kingdom	
123.340	Austria	
123.840	Belgium	
124.855	Italy	
125.690	Netherlands	
126.935	Slovakia	
127.540	Slovenia	
128.385	France	
129.690	Switzerland	
129.860	Finland	Sweden
129.960	Poland	
130.085	Denmark	
132.910	Lithuania	Estonia
133.990	Japan	Spain





End of Self Briefing